



RECP #: 752754

RECORDED 5/8/2019 AT 1:16 PM BK# 2620 PG# 1796
Debra K. Lee, CLERK OF LARAMIE COUNTY, WY PAGE 1 OF 1

STATE OF WYOMING CORNER RECORD

(In compliance with the CORNER PERPETUATION AND FILING ACT, Wyoming Statutes, 1997 Section 33-29-140, et. seq., and the Rules and Regulations of the Board of Registrations for Professional Engineers and Professional Land Surveyors)

EAST QUARTER CORNER SECTION 31, T. 18 N., R. 62 W., 6TH P.M., LARAMIE COUNTY, WYOMING

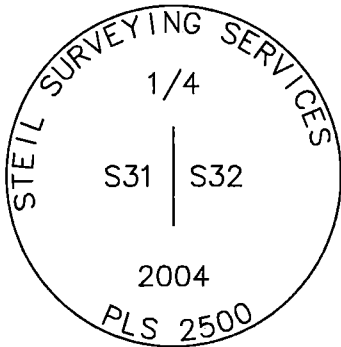
GLO: SET A SANDSTONE 16x14x3, 10 ins. DEEP, MARKED $\frac{1}{4}$ ON THE WEST SIDE FOR $\frac{1}{4}$ SECTION CORNER

FOUND: SANDSTONE REMAINS AND 2 $\frac{1}{2}$ INCH ALUMINUM CAP MARKED AS SHOWN

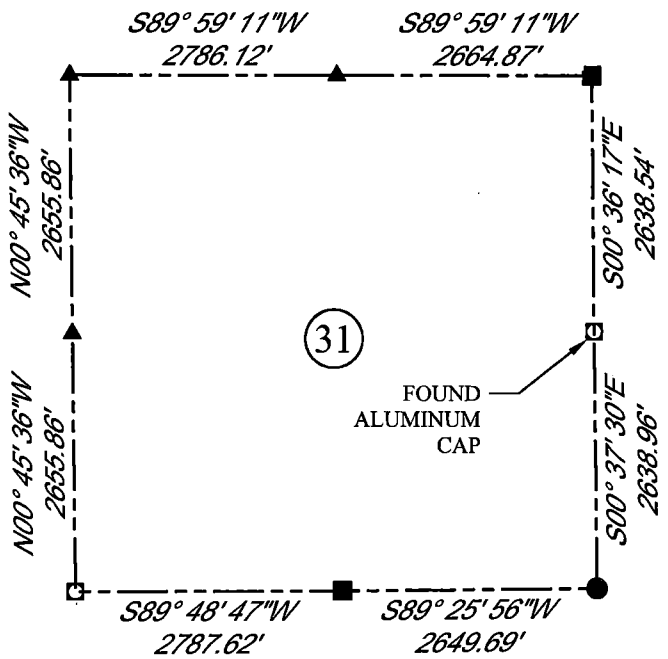


SCALE: NONE
NORTH DETERMINED BY
G.P.S OBSERVATIONS

FOUND 2 $\frac{1}{2}$ " ALUMINUM CAP, STAMPED AS SHOWN



DATE OF FIELD WORK: 08/20/2018 OFFICE REFERENCE: MERIDEN



LEGEND:

- FOUND BLM CAP
- FOUND USFS CAP
- FOUND STONE
- ◻ FOUND PRIVATE MONUMENT
- ◇ CALCULATED POSITION
- ▲ SET MONUMENT (LS10245)
- SECTION LINE

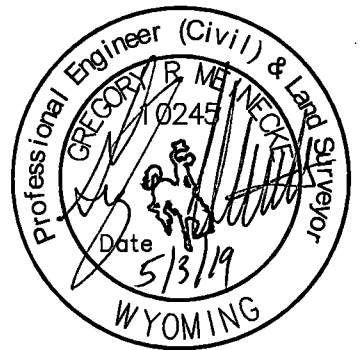
CROSS INDEX DIAGRAM

1	2	3	4	5	6	7	8	9	10	11	12	13	14	15	16	17	18	19	20	21	22	23	24	25	
A																									A
B																									B
C	6																								C
D		5																							D
E			4																						E
F				3																					F
G					2																				G
H						1																			H
I																									I
J																									J
K																									K
L	18																								L
M		17																							M
N			16																						N
O				15																					O
P					14																				P
Q						13																			Q
R							12																		R
S								11																	S
T									10																T
U										9															U
V											8														V
W												7													W
X													6												X
Y														5											Y
Z															4										Z
	1	2	3	4	5	6	7	8	9	10	11	12	13	14	15	16	17	18	19	20	21	22	23	24	25

WOOD
2615 AVIATION DRIVE
SHERIDAN, WY 82801
PH: 307-675-6400



THIS CORNER RECORD WAS
PREPARED BY ME OR UNDER
MY DIRECTION AND
SUPERVISION,
SEAL AND SIGNATURE



CORNER NAME: EAST QUARTER SECTION: 31 T. 18 N., R. 62 W. ; 6TH P.M. CROSS-INDEX # X-5
SBRPELS/PLSW: MARCH 1994; PLSW JANUARY 1998